

EU Migration

2019

Europe as Emigration States

- 1500-1800, ~1.5m Europeans emigrated to the New World
- Passport-free travel was the norm in Europe until WW1
- US had open borders until 1882
- 1815-1932, ~60 million Europeans emigrated, about half to the US, the rest to Argentina, Brazil, Canada, Australia, etc. 71% to North America
- Citizenship is a complex topic – Jus Sanguinis vs. Jus Soli

Post WW2 Population Transfers

- Soviet declarations and Allied agreements set the post-war borders.
- 1944-50, 5-10 million German-speaking civilians fled Eastern Europe and moved into Germany (largest population transfer in history)
- Millions of Soviet citizens in Western Europe, forcefully repatriated 1945-47, 1.5 million Red Army soldiers captured by Nazis were sent to Gulags
- ~2m Poles ejected from Soviet borders, and ~.5m Ukrainians removed from new Polish borders - “A further 200,000 Ukrainians left southeast Poland more or less voluntarily between 1944 and 1945”

'Guest Workers'

- German 'Wirtschaftswunder', Turkish migrants came to work, and stayed. 2.5-4m people of full or partial Turkish descent in Germany today.
- France promoted immigration for similar reasons, with 5.3m first-generation immigrants in 2008, 6.5m with at least one immigrant parents. Primarily Eastern Europe, North Africa, Asia
- Struggles to integrate, assimilate.
- Germany - very limited right to citizenship, very limited dual citizenship, France offers citizenship at age 18 if born in France, dual citizenship.

Common European Asylum System

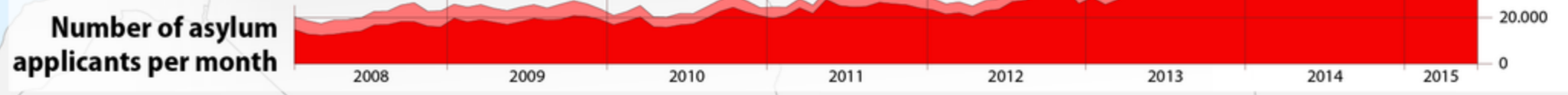
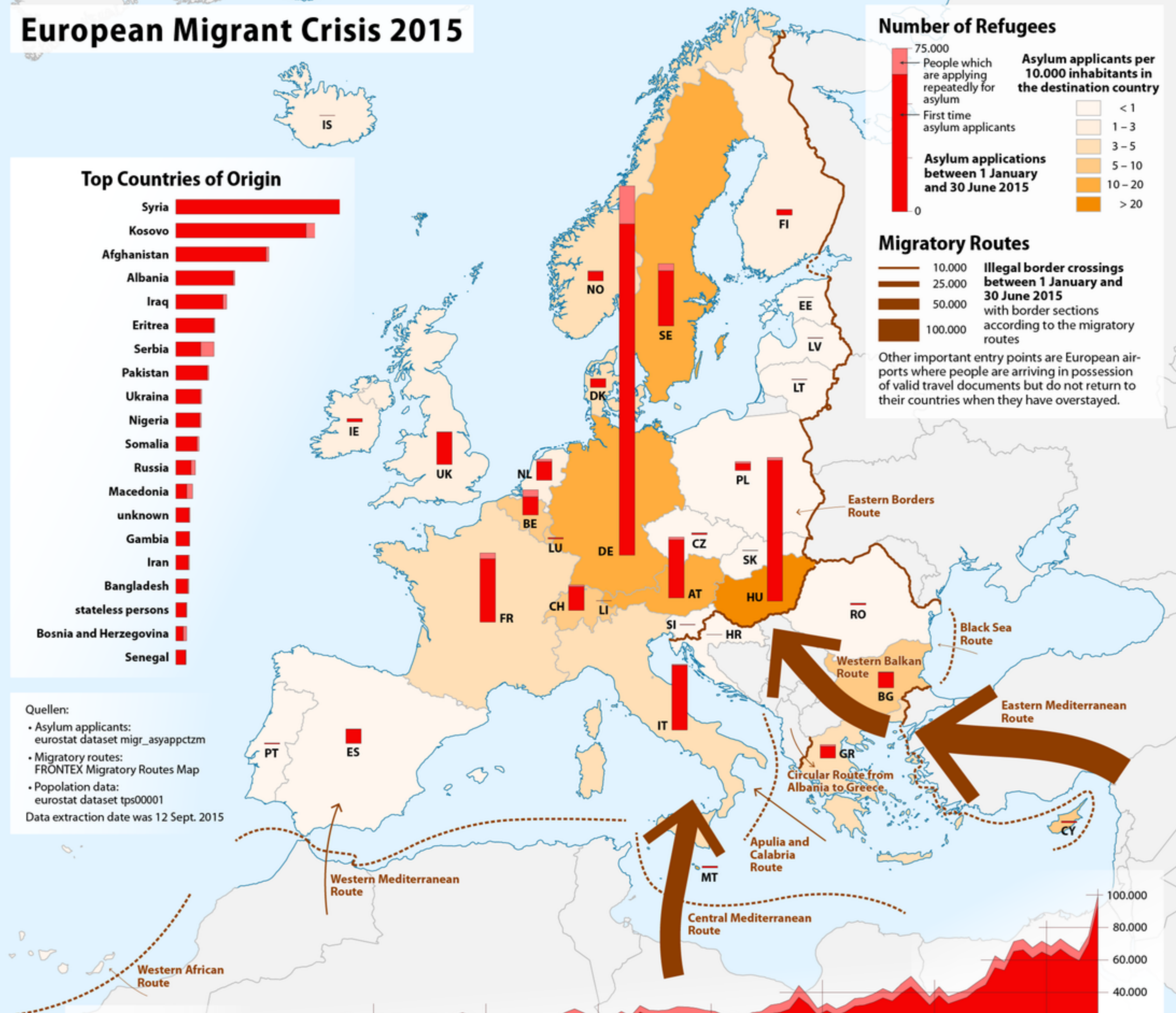
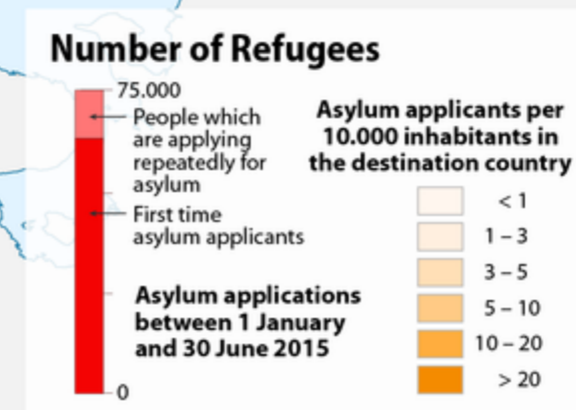
- ‘Refugee’ is in this context a legal status, granted by the receiving nation after application for Asylum. Migrants and Asylum-seekers are separate categories
- 2005 agreement sets out minimum standards for processing Asylum applications and handling of those granted refugee status.
- Dublin Regulation requires state of first arrival to take responsibility and accept asylum application
- Goals are to avoid multiple and ‘orbiting’ asylum applications
- Issues: puts huge obligations on receiving nations, can make it difficult for asylum-seekers to apply, encourages trafficking



European Migrant Crisis 2015



Quellen:
 • Asylum applicants: eurostat dataset migr_asyappctzm
 • Migratory routes: FRONTEX Migratory Routes Map
 • Population data: eurostat dataset tps00001
 Data extraction date was 12 Sept. 2015



MIGRATORY ROUTES MAP



Detections of illegal border-crossings statistics download (updated monthly)

Main migratory routes into the EU / land & sea

- ▶ Western African route
- ▶ Western Mediterranean route
- ▶ Central Mediterranean route
- ▶ Apulia and Calabria route
- ▶ Circular route from Albania to Greece
- ▶ Western Balkan route
- ▶ Eastern Mediterranean route
- ▶ Eastern Borders route
- Schengen area
- Schengen associate countries

Canary Islands



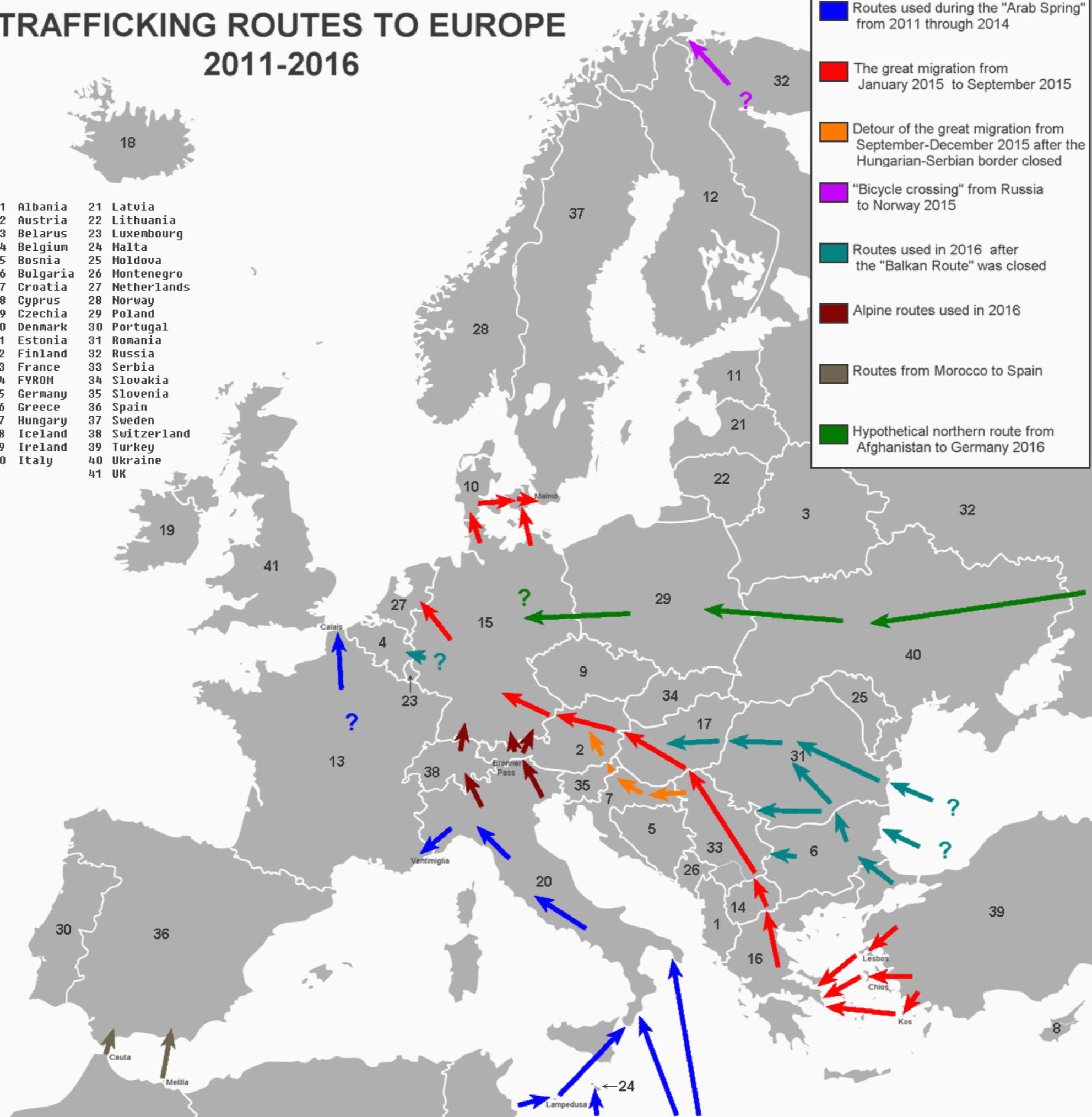
2014-15 Crisis

- Syrian war heats up, Libya stabilizes enough for migrant flows, Macedonia opens borders for transit
- Migrant flows from/through Turkey to Greece had been increasing since ~2007
- 2008, Italy adopted policy of forced returns for migrants found at sea. This ends with Libyan collapse 2011. 2013 Lampedusa shipwreck, 360 migrants killed. Italy moves to a search/rescue approach. 2014, Italy stops this operation, too expensive for one state to bear alone. EU denies funds, Frontex concerned this is a 'pull'
- Germany adopts unilateral 'open arms' policy, abandons Dublin rules, 1m+ asylum seekers arrive in 2015 alone.
- 2015, Greece overtakes Italy as focus of arrivals. 1.82 million arrivals, ~1m people (counted in both Greece and Hungary/Croatia) 4x+ 2014 numbers. Greece requests EUR 480m in emergency funds.
- Macedonia border closure reduces numbers vastly by March 2016.

TRAFFICKING ROUTES TO EUROPE 2011-2016

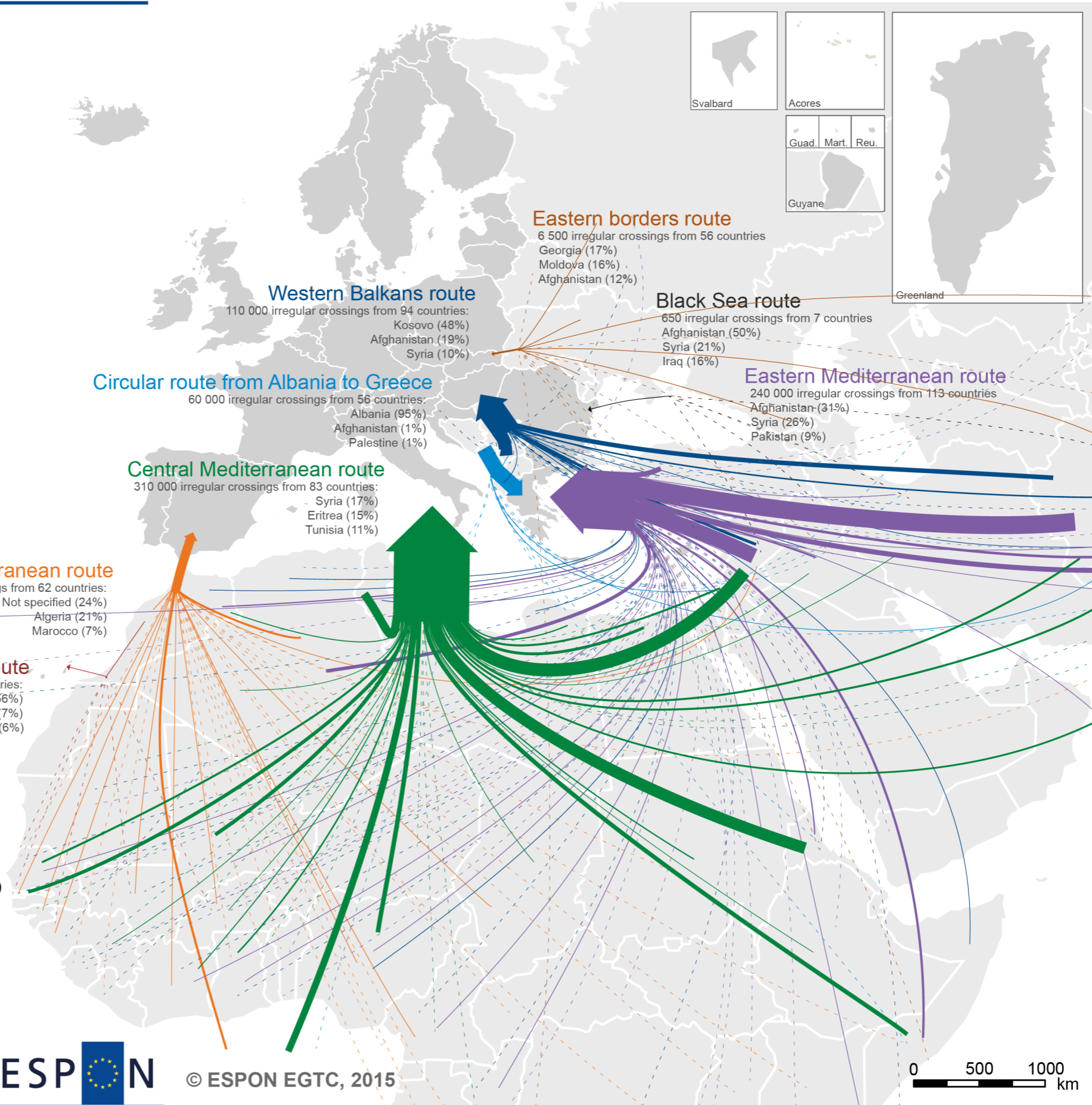
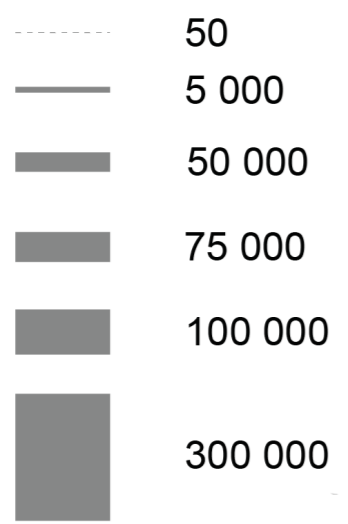
- | | | | |
|----|----------|----|-------------|
| 1 | Albania | 21 | Latvia |
| 2 | Austria | 22 | Lithuania |
| 3 | Belarus | 23 | Luxembourg |
| 4 | Belgium | 24 | Malta |
| 5 | Bosnia | 25 | Moldova |
| 6 | Bulgaria | 26 | Montenegro |
| 7 | Croatia | 27 | Netherlands |
| 8 | Cyprus | 28 | Norway |
| 9 | Czechia | 29 | Poland |
| 10 | Denmark | 30 | Portugal |
| 11 | Estonia | 31 | Romania |
| 12 | Finland | 32 | Russia |
| 13 | France | 33 | Serbia |
| 14 | FYROM | 34 | Slovakia |
| 15 | Germany | 35 | Slovenia |
| 16 | Greece | 36 | Spain |
| 17 | Hungary | 37 | Sweden |
| 18 | Iceland | 38 | Switzerland |
| 19 | Ireland | 39 | Turkey |
| 20 | Italy | 40 | Ukraine |
| | | 41 | UK |

- █ Routes used during the "Arab Spring" from 2011 through 2014
- █ The great migration from January 2015 to September 2015
- █ Detour of the great migration from September-December 2015 after the Hungarian-Serbian border closed
- █ "Bicycle crossing" from Russia to Norway 2015
- █ Routes used in 2016 after the "Balkan Route" was closed
- █ Alpine routes used in 2016
- █ Routes from Morocco to Spain
- █ Hypothetical northern route from Afghanistan to Germany 2016



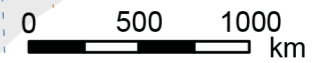
Map 1 - Main irregular border crossing routes by nationalities, 2010 - 2015 (Q1)

Detections



Regional level: NUTS 0 (2006)
Source: ESPON EGTC, 2015
Origin of data: Frontex, 2015
© Eurostat for administrative boundaries

This map does not necessarily reflect the opinion of the ESPON Monitoring Committee



2017 Deals

- 2017 EU-Turkey Agreement - Turkey gets EUR 3b, another EUR 3b in 2018, accepts returned migrants, swaps for 'legal' migrants, visa-free admission to EU for Turkish citizens
- 3.5m migrants in Turkey mid-2018. 97% reduction in migration
- 2017 Italy-Libya agreement – financing for Libya south border, EUR 285m/5 years for Libyan Coast Guard stops departures, Libya accepts returns from Italy
- 2018 EU Agreement – voluntary cooperation to distribute migrants, reception centers in Africa and Balkans for pre-processing, EU funding for Turkey/Libya, support for Italy, 2019 September agreement for France/Germany to take migrants rescued at sea